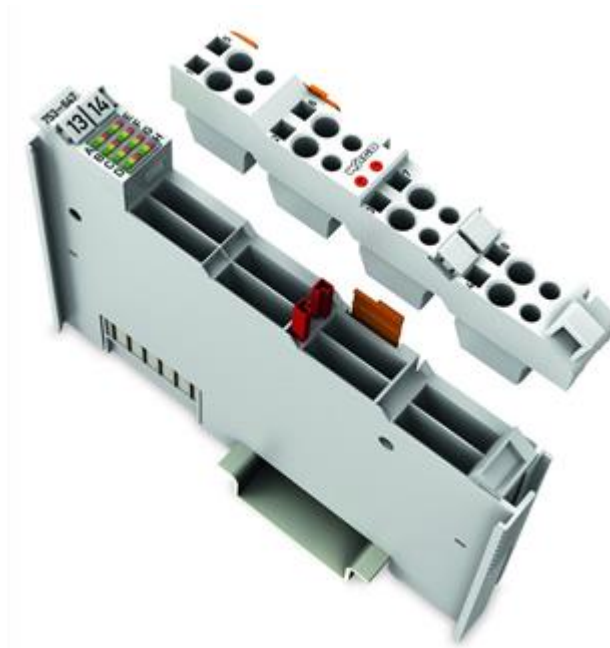


Compatibility list



e! COCKPIT



WAGO-I/O-
PRO V2.3

Compatibility list DALI Sensors

DALI Multi-Master Module 753-647

Version 1.1.6

© 2018 by WAGO Kontakttechnik GmbH & Co. KG
All rights reserved.

WAGO Kontakttechnik GmbH & Co. KG

Hansastraße 27
D-32423 Minden

Tel.: +49 (0) 571/8 87 – 0
Fax: +49 (0) 571/8 87 – 1 69

E-Mail: info@wago.com

Web: <http://www.wago.com>

Technical Support

Tel.: +49 (0) 571/887 – 44 555
Fax: +49 (0) 571/887 – 844 555

E-Mail: support@wago.com

Every conceivable measure has been taken to ensure the accuracy and completeness of this documentation. However, as errors can never be fully excluded, we always appreciate any information or suggestions for improving the documentation.

We wish to point out that the software and hardware terms, as well as the trademarks of companies used and/or mentioned in the present document are generally protected by trademark or patent.

Symbols

**DANGER**

Personal Injury!

Indicates a high-risk, imminently hazardous situation which, if not avoided, will result in death or serious injury.

**DANGER**

Personal Injury Caused by Electric Current!

Indicates a high-risk, imminently hazardous situation which, if not avoided, will result in death or serious injury.

**WARNING**

Personal Injury!

Indicates a moderate-risk, potentially hazardous situation which, if not avoided, could result in death or serious injury.

**CAUTION**

Personal Injury!

Indicates a low-risk, potentially hazardous situation which, if not avoided, may result in minor or moderate injury.

NOTICE

Damage to Property!

Indicates a potentially hazardous situation which, if not avoided, may result in damage to property.

NOTICE

Damage to Property Caused by Electrostatic Discharge (ESD)!

Indicates a potentially hazardous situation which, if not avoided, may result in damage to property.

Note

Important Note!

Indicates a potential malfunction which, if not avoided, however, will not result in damage to property.

Information

**Additional Information:**

Refers to additional information which is not an integral part of this documentation (e.g., the Internet).

Legal Bases

Subject to Change

WAGO Kontakttechnik GmbH & Co. KG reserves the right to make any alterations or modifications that serve to increase the efficiency of technical progress. WAGO Kontakttechnik GmbH & Co. KG owns all rights arising from granting patents or from the legal protection of utility patents. Third-party products are always mentioned without any reference to patent rights. Thus, the existence of such rights cannot be excluded.

Personnel Qualification

The use of the product described in this document is exclusively geared to specialists having qualifications in PLC programming, electrical specialists or persons instructed by electrical specialists who are also familiar with the appropriate current standards.

Moreover, the persons cited here must also be familiar with all of the products cited in this document, along with the operating instructions. They must also be capable of correctly predicting any hazards which may not arise until the products are combined.

WAGO Kontakttechnik GmbH & Co. KG assumes no liability resulting from improper action and damage to WAGO products and third-party products due to non-observance of the information contained in this document.

Limitation of Liability

This documentation describes the use of various hardware and software components in specific example applications. The components may represent products or parts of products from different manufacturers. The respective operating instructions from the manufacturers apply exclusively with regard to intended and safe use of the products. The manufacturers of the respective products are solely responsible for the contents of these instructions.

The sample applications described in this documentation represent concepts, that is, technically feasible application. Whether these concepts can actually be implemented depends on various boundary conditions. For example, different versions of the hardware or software components can require different handling than that described here. Therefore, the descriptions contained in this documentation do not form the basis for assertion of a certain product characteristic.

Responsibility for safe use of a specific software or hardware configuration lies with the party that produces or operates the configuration. This also applies when one of the concepts described in this document was used for implementation of the configuration.

WAGO Kontakttechnik GmbH & Co. KG is not liable for any actual implementation of the concepts.

Table of Contents

| | |
|--|-----------|
| Table of Contents..... | 6 |
| 1 CODESYS V2.3 Applications | 8 |
| 1.1 DALI Sensors | 8 |
| 1.1.1 WAGO Sensors | 8 |
| 1.1.2 Osram Sensors | 9 |
| 1.1.3 Tridonic Sensors | 10 |
| 1.1.4 Theben (HTS) Sensors | 10 |
| 1.1.5 Lunatone Sensors..... | 11 |
| 1.1.6 Steinel Livelink Sensors | 12 |
| 1.2 DALI-2 Sensors | 13 |
| 1.2.1 Steinel Sensors DALI-2..... | 13 |
| 1.2.2 Niko / Züblin DALI-2 | 15 |
| 1.2.3 B.E.G. Sensors DALI-2..... | 16 |
| 1.2.4 Tridonic Sensors DALI-2 | 16 |
| 2 e!COCKPIT Applications | 17 |
| 2.1 DALI Sensors | 17 |
| 2.1.1 WAGO Sensors | 17 |
| 2.1.2 Osram Sensors | 18 |
| 2.1.3 Tridonic Sensors | 19 |
| 2.1.4 Lunatone Sensors..... | 19 |
| 2.2 DALI-2 Sensors | 20 |
| 2.2.1 Steinel Sensors DALI-2..... | 20 |
| 2.2.2 Niko / Züblin DALI-2 | 22 |
| 2.2.3 B.E.G. Sensors DALI-2..... | 22 |
| 2.2.4 Tridonic Sensors DALI-2 | 23 |
| 3 WAGO Lighting Management Software | 24 |
| 3.1 WAGO Sensors | 24 |
| 3.2 Osram Sensors..... | 25 |
| 3.3 Tridonic Sensors..... | 26 |
| 4 WAGO flexROOM® V3.x.x.x | 27 |
| 4.1 WAGO Sensors | 27 |
| 4.2 Osram Sensors..... | 28 |
| 4.3 Tridonic Sensors..... | 29 |
| 5 WAGO DALI Configurator | 30 |
| 5.1 DALI Sensors | 30 |
| 5.1.1 WAGO Sensors | 30 |
| 5.1.2 Osram Sensors | 32 |
| 5.1.3 Tridonic Sensors | 33 |
| 5.1.4 Theben (HTS) Sensors | 34 |
| 5.1.5 Lunatone Sensors..... | 34 |
| 5.1.6 Steinel Sensors Livelink | 35 |
| 5.2 DALI-2 Sensors | 36 |
| 5.2.1 Steinel Sensors DALI-2..... | 36 |

| | | |
|-------|------------------------------|----|
| 5.2.2 | Niko / Züblin DALI-2 | 38 |
| 5.2.3 | B.E.G. Sensors DALI-2..... | 39 |
| 5.2.4 | Tridonic Sensors DALI-2..... | 39 |

1 CODESYS V2.3 Applications

1.1 DALI Sensors

1.1.1 WAGO Sensors

| Device type | Description | Article Number | Sensor type | Additional information |
|----------------|--|------------------------|-------------|---|
| Multi-Sensor | WAGO-DALI-Multi-Sensor-Kit | 2851-8201 | 1 | - |
| Sensor-Coupler | WAGO-DALI-Sensor-Coupler | 2851-8202 | 1 | - |
| Multi-Sensor | WAGO-DALI-MSensor-02 5DPI 41rc | 2851-8301 | 2 | - |
| Multi-Sensor | WAGO-DALI-MSensor-02 5DPI 41w | 2851-8302 | 2 | - |
| Multi-Sensor | WAGO-DALI-MSensor-02 5DPI 41rs | 2851-8303 | 2 | - |
| Multi-Sensor | DALI Highbay Adapter + DALI Highbay | 2852-7207 2852-7201 | 1 | NOTE: The delay period (default 15 min) has to be set directly at the device. For further information see device manual. |
| Multi-Sensor | DALI Highbay Adapter + DALI Vision | 2852-7207 2852-7202 | 1 | - |
| Multi-Sensor | DALI LS/PD LI | 2852-7203 | 1 | Installation via LS/PD CI KIT or LS/PD AP KIT possible |
| Sensor-Coupler | DALI Sensor Coupler E | 2852-7204 | 1 | - |

| | | | | |
|----------------|---|-----------|---|---|
| Multi-Sensor | DALI Sensor Coupler HF LS LI + HF LS LI + 4p4c Connection Cable | 2852-7205 | 1 | - |
| | | 2852-7206 | | |
| | | 2852-7208 | | |
| Switch Coupler | DALI XC | 2852-7301 | 2 | - |

1.1.2 Osram Sensors

| Device type | Description | Article Number | Sensor type | Additional information |
|----------------|---|----------------------------------|-------------|---|
| Multi-Sensor | Sensor Adapter + DALI Highbay | 4008321 774132 4008321 410078 | 1 | NOTE: The delay period (default 15 min) has to be set directly at the device. For further information see device manual. |
| Multi-Sensor | Sensor Adapter + DALI Vision | 4008321 774132 4008321 957047 | 1 | - |
| Multi-Sensor | DALI LS/PD LI | 4052899 043954 | 1 | Installation via LS/PD CI KIT or LS/PD AP KIT possible |
| Multi-Sensor | DALI Professional Sensor Coupler HF LS LI + DALI Radar Sensor HF LS LI | 4052899 141728 4052899 921481 | 1 | - |
| Gateway | DALI Sensor Coupler E | 4052899 230491 | 1 | - |
| Switch Coupler | DALI PRO PB Coupler | 4008321 496461 | 1 | - |

1.1.3 Tridonic Sensors

| Device type | Description | Article Number | Sensor type | Additional information |
|----------------|----------------------------------|----------------|-------------|------------------------|
| Multi-Sensor | MSensor 5DPI 14f (MSensor Mini) | 28000935 | 2 | - |
| Multi-Sensor | MSensor 5DPI 14rc (MSensor Mini) | 28000936 | 2 | - |
| Switch Coupler | DALI XC | 22185327 | 2 | - |
| Multi-Sensor | DALI-MSensor 02 5DPI 41rc | 28000895 | 2 | - |
| Multi-Sensor | DALI-MSensor 02 5DPI 41w | 28000896 | 2 | - |
| Multi-Sensor | DALI-MSensor 02 5DPI 41rs | 28000894 | 2 | - |
| | | | | |
| | | | | |

1.1.4 Theben (HTS) Sensors

| Device type | Description | Article Number | Sensor type | Additional information |
|--------------|--|----------------|-------------|--|
| Multi-Sensor | PlanoSpot 360 DALI DE WH Presence Detector | 2030110 | Standard | -DALI_647_SpecialSensor_02.lib needed. -Configuration via the DALI_647_SpecialSensor_02 visualization possible. |

1.1.5 Lunatone Sensors

| Device type | Description | Article Number | Sensor type | Additional information |
|----------------------|---|----------------|-------------|----------------------------------|
| Multi Control Module | DALI MC+ | 86459532-WA | 2 | Not all parameters are supported |
| Switch | DALI Switch Cross Multifunctional Switch Module | 86459793 | 2 | Not all parameters are supported |

1.1.6 Steinel Livelink Sensors

Note



Special library and visualization needed!

For usage of the Steinel Livelink Sensors the DALI_647_SpecialSensor_02.lib is needed.

Configuration via the DALI_647_SpecialSensor_02 visualization possible.

| Device type | Description | Article Number | Sensor type | Additional information |
|--------------|--|----------------|-------------|------------------------|
| Multi-Sensor | Presence Detector Dual HF Livelink | 4007841009700 | Standard | |
| Multi-Sensor | Presence Detector IR Quattro HD Livelink | 4007841009717 | Standard | |
| Multi-Sensor | Control Pro HF360 | 4007841033972 | Standard | |
| Multi-Sensor | Control Pro US dualtech | 4007841008451 | Standard | |
| Multi-Sensor | Control Pro US 360 | 4007841008444 | Standard | |
| Multi-Sensor | Control Pro US aisle single | 4007841008437 | Standard | |
| Multi-Sensor | IR Quattro Slim XS | 4007841033040 | Standard | |
| Multi-Sensor | IS 3360 MX Highbay | 4007841009724 | Standard | |
| Multi-Sensor | IS 345 MX Highbay | 4007841009731 | Standard | |
| Multi-Sensor | IR micro sensor | 4007841009748 | Standard | |
| Multi-Sensor | IS 3180 | 4007841049362 | Standard | |
| Multi-Sensor | IS 3360 | 4007841049379 | Standard | |
| Multi-Sensor | IS 345 | 4007841049416 | Standard | |
| Multi-Sensor | HF 3360 | 4007841049454 | Standard | |

1.2 DALI-2 Sensors



Note

Special library and visualization needed!

For the usage of the DALI-2 sensors `WagoAppDali` version V1.1.0.13 or newer is needed.
 The actual version can be requested via the WAGO Support.

1.2.1 Steinel Sensors DALI-2

| Device type | Description | Article Number | Sensor type | Additional information |
|--------------|--|--------------------------------|-------------|------------------------|
| Multi-Sensor | IR Quattro | | Standard | |
| | - HD DALI-2 | 4007841057497 | | |
| | - SLIM XS DALI-2 | | | |
| | <ul style="list-style-type: none"> • Flush-mounted, angular • Flush-mounted, round | 4007841057510 4007841057527 | | |
| | - MICRO DALI-2 | 4007841053871 | | |
| Multi-Sensor | IR MICRO DALI-2 | 4007841057732 | Standard | |
| Multi-Sensor | DUAL HF DALI-2 | 4007841057459 | Standard | |
| Multi-Sensor | HF 360 DALI-2 | 4007841057480 | Standard | |
| Multi-Sensor | US 360 DALI-2 | 4007841057534 | Standard | |
| Multi-Sensor | Dual US DALI-2 | 4007841057466 | Standard | |
| Multi-Sensor | Single US DALI-2 | 4007841057503 | Standard | |
| Multi-Sensor | DualTech DALI-2 | 4007841057473 | Standard | |

| | | | | |
|--------------|--|--|----------|--|
| Multi-Sensor | IS 3360 DALI-2 - Wall-mounted, angular - Wall-mounted, round - Flush-mounted, angular - Flush-mounted, round | 4007841057237 4007841057251 4007841057244 4007841057268 | Standard | |
| Multi-Sensor | IS 345 DALI-2 - Wall-mounted, angular - Wall-mounted, round - Flush-mounted, angular - Flush-mounted, round | 4007841057275 4007841057299 4007841057282 4007841057305 | Standard | |
| Multi-Sensor | HF 3360 DALI-2 - Wall-mounted, angular - Wall-mounted, round - Flush-mounted, angular - Flush-mounted, round | 4007841057312 4007841057329 4007841057336 4007841057343 | Standard | |
| Multi-Sensor | IS 3360 MX Highbay DALI-2 - Wall-mounted, angular - Flush-mounted, angular | 4007841057374 4007841057381 | Standard | |
| Multi-Sensor | IS 345 MX Highbay DALI-2 - Wall-mounted, angular - Flush-mounted, angular | 4007841057398 4007841057404 | Standard | |
| Multi-Sensor | IS 3180 DALI-2 - Wall-mounted, angular - Concealed, angular | 4007841057350 4007841057367 | Standard | |

| | | | | |
|--------------|--|--|----------|--|
| Multi-Sensor | Light Sensor Dual DALI-2 - Wall-mounted, angular - Wall-mounted, round - Flush-mounted, angular - Flush-mounted, round | 4007841057411 4007841057428 4007841057435 4007841057442 | Standard | |
| Multi-Sensor | Light Sensor Dual | 4007841009762 | Standard | |

1.2.2 Niko / Züblin DALI-2

| Device type | Description | Article Number | Sensor type | Additional information |
|--------------|--|----------------|-------------|------------------------|
| Multi-Sensor | BMS DALI-2 - Ceiling, 24m, flush mounted | 41-742 | Standard | IP 54, 360° (3x120°) |
| Multi-Sensor | BMS DALI-2 - Ceiling, 24m, surface mounted | 41-743 | Standard | IP 54, 360° (3x120°) |
| Multi-Sensor | BMS DALI-2 - High Ceiling, 32m, surface mounted | 41-745 | Standard | IP 54, 360° (3x120°) |

1.2.3 B.E.G. Sensors DALI-2

| Device type | Description | Article Number | Sensor type | Additional information |
|--------------|-------------------------|----------------|-------------|--|
| Multi-Sensor | PD4-DALI-2-BMS-FC | 93312 | Standard | IP 20 |
| Multi-Sensor | PD4-DALI-2-BMS-SM | 93325 | Standard | IP 54 |
| Multi-Sensor | PD4-DALI-2-BMS-C-FC | 93332 | Standard | IP 20 |
| Multi-Sensor | PD4-DALI-2-BMS-C-SM | 93357 | Standard | IP 54 |
| Multi-Sensor | PD11-DALI-2-BMS-FLAT-FC | 93330 | Standard | IP 20 Installation via Flush mount adapter set possible |

1.2.4 Tridonic Sensors DALI-2

| Device type | Description | Article Number | Sensor type | Additional information |
|--------------|--------------------------------|----------------|-------------|------------------------|
| Multi-Sensor | MSensor G3 SFI 30 PIR 10DPI WH | 28002119 | Standard | Mid Bay Sensor |
| Multi-Sensor | MSensor G3 SFI 30 PIR 16DPI WH | 28002234 | Standard | High Bay Sensor |

2 e!COCKPIT Applications

2.1 DALI Sensors

2.1.1 WAGO Sensors

| Device type | Description | Article Number | Sensor type | Additional information |
|----------------|--|------------------------|-------------|--|
| Multi-Sensor | WAGO-DALI-Multi-Sensor-Kit | 2851-8201 | 1 | - |
| Sensor-Coupler | WAGO-DALI-Sensor-Coupler | 2851-8202 | 1 | - |
| Multi-Sensor | WAGO-DALI-MSensor-02 5DPI 41rc | 2851-8301 | 2 | - |
| Multi-Sensor | WAGO-DALI-MSensor-02 5DPI 41w | 2851-8302 | 2 | - |
| Multi-Sensor | WAGO-DALI-MSensor-02 5DPI 41rs | 2851-8303 | 2 | - |
| Multi-Sensor | DALI Highbay Adapter + DALI Highbay | 2852-7207 2852-7201 | 1 | NOTE: The delay period (default 15 min) has to be set directly at the device. For further information see device manual |
| Multi-Sensor | DALI Highbay Adapter + DALI Vision | 2852-7207 2852-7202 | 1 | - |
| Multi-Sensor | DALI LS/PD LI | 2852-7203 | 1 | Installation via LS/PD CI KIT or LS/PD AP KIT possible |
| Sensor-Coupler | DALI Sensor Coupler E | 2852-7204 | 1 | - |

| | | | | |
|----------------|---|-----------|---|---|
| Multi-Sensor | DALI Sensor Coupler HF LS LI + HF LS LI + 4p4c Connection Cable | 2852-7205 | 1 | - |
| | | 2852-7206 | | |
| | | 2852-7208 | | |
| Switch Coupler | DALI XC | 2852-7301 | 2 | - |

2.1.2 Osram Sensors

| Device type | Description | Article Number | Sensor type | Additional information |
|----------------|---|----------------------------------|-------------|---|
| Multi-Sensor | Sensor Adapter + DALI Highbay | 4008321 774132 4008321 410078 | 1 | NOTE: The delay period (default 15 min) has to be set directly at the device. For further information see device manual. |
| Multi-Sensor | Sensor Adapter + DALI Vision | 4008321 774132 4008321 957047 | 1 | - |
| Multi-Sensor | DALI LS/PD LI | 4052899 043954 | 1 | Installation via LS/PD CI KIT or LS/PD AP KIT possible |
| Multi-Sensor | DALI Professional Sensor Coupler HF LS LI + DALI Radar Sensor HF LS LI | 4052899 141728 4052899 921481 | 1 | - |
| Gateway | DALI Sensor Coupler E | 4052899 230491 | 1 | - |
| Switch Coupler | DALI PRO PB Coupler | 4008321 496461 | 1 | - |

2.1.3 Tridonic Sensors

| Device type | Description | Article Number | Sensor type | Additional information |
|----------------|----------------------------------|----------------|-------------|------------------------|
| Multi-Sensor | MSensor 5DPI 14f (MSensor Mini) | 28000935 | 2 | - |
| Multi-Sensor | MSensor 5DPI 14rc (MSensor Mini) | 28000936 | 2 | - |
| Switch Coupler | DALI XC | 22185327 | 2 | - |
| Multi-Sensor | DALI-MSensor 02 5DPI 41rc | 28000895 | 2 | - |
| Multi-Sensor | DALI-MSensor 02 5DPI 41w | 28000896 | 2 | - |
| Multi-Sensor | DALI-MSensor 02 5DPI 41rs | 28000894 | 2 | - |

2.1.4 Lunatone Sensors

| Device type | Description | Article Number | Sensor type | Additional information |
|----------------------|---|----------------|-------------|----------------------------------|
| Multi Control Module | DALI MC+ | 86459532-WA | 2 | Not all parameters are supported |
| Switch | DALI Switch Cross Multifunctional Switch Module | 86459793 | 2 | Not all parameters are supported |

2.2 DALI-2 Sensors



Note

Special library and visualization needed!

For the usage of the DALI-2 sensors `WagoAppDali` version V1.1.0.13 or newer is needed.
The actual version can be requested via the WAGO Support.

2.2.1 Steinel Sensors DALI-2

| Device type | Description | Article Number | Sensor type | Additional information |
|--------------|--|--------------------------------|-------------|------------------------|
| Multi-Sensor | IR Quattro | | Standard | |
| | - HD DALI-2 | 4007841057497 | | |
| | - SLIM XS DALI-2 | | | |
| | <ul style="list-style-type: none"> • Flush-mounted, angular • Flush-mounted, round | 4007841057510 4007841057527 | | |
| | - MICRO DALI-2 | 4007841053871 | | |
| Multi-Sensor | IR MICRO DALI-2 | 4007841057732 | Standard | |
| Multi-Sensor | DUAL HF DALI-2 | 4007841057459 | Standard | |
| Multi-Sensor | HF 360 DALI-2 | 4007841057480 | Standard | |
| Multi-Sensor | US 360 DALI-2 | 4007841057534 | Standard | |
| Multi-Sensor | Dual US DALI-2 | 4007841057466 | Standard | |
| Multi-Sensor | Single US DALI-2 | 4007841057503 | Standard | |

Compatibility list DALI Sensors

| | | | | |
|--------------|--|--|----------|--|
| Multi-Sensor | DualTech DALI-2 | 4007841057473 | Standard | |
| Multi-Sensor | IS 3360 DALI-2 - Wall-mounted, angular - Wall-mounted, round - Flush-mounted, angular - Flush-mounted, round | 4007841057237 4007841057251 4007841057244 4007841057268 | Standard | |
| Multi-Sensor | IS 345 DALI-2 - Wall-mounted, angular - Wall-mounted, round - Flush-mounted, angular - Flush-mounted, round | 4007841057275 4007841057299 4007841057282 4007841057305 | Standard | |
| Multi-Sensor | HF 3360 DALI-2 - Wall-mounted, angular - Wall-mounted, round - Flush-mounted, angular - Flush-mounted, round | 4007841057312 4007841057329 4007841057336 4007841057343 | Standard | |
| Multi-Sensor | IS 3360 MX Highbay DALI-2 - Wall-mounted, angular - Flush-mounted, angular | 4007841057374 4007841057381 | Standard | |
| Multi-Sensor | IS 345 MX Highbay DALI-2 - Wall-mounted, angular - Flush-mounted, angular | 4007841057398 4007841057404 | Standard | |
| Multi-Sensor | IS 3180 DALI-2 - Wall-mounted, angular - Concealed, angular | 4007841057350 4007841057367 | Standard | |

| | | | | |
|--------------|--|--|----------|--|
| Multi-Sensor | Light Sensor Dual DALI-2 - Wall-mounted, angular - Wall-mounted, round - Flush-mounted, angular - Flush-mounted, round | 4007841057411 4007841057428 4007841057435 4007841057442 | Standard | |
|--------------|--|--|----------|--|

2.2.2 Niko / Züblin DALI-2

| Device type | Description | Article Number | Sensor type | Additional information |
|--------------|--|----------------|-------------|------------------------|
| Multi-Sensor | BMS DALI-2 - Ceiling, 24m, flush mounted | 41-742 | Standard | IP 20, 360° (3x120°) |
| Multi-Sensor | BMS DALI-2 - Ceiling, 24m, surface mounted | 41-743 | Standard | IP 54, 360° (3x120°) |
| Multi-Sensor | BMS DALI-2 - High Ceiling, 32m, flush mounted | 41-745 | Standard | IP 54, 360° (3x120°) |

2.2.3 B.E.G. Sensors DALI-2

| Device type | Description | Article Number | Sensor type | Additional information |
|--------------|-------------------------|----------------|-------------|------------------------|
| Multi-Sensor | PD4-DALI-2-BMS-FC | 93312 | Standard | IP 20 |
| Multi-Sensor | PD4-DALI-2-BMS-SM | 93325 | Standard | IP 54 |
| Multi-Sensor | PD4-DALI-2-BMS-C-FC | 93332 | Standard | IP 20 |
| Multi-Sensor | PD4-DALI-2-BMS-C-SM | 93357 | Standard | IP 54 |
| Multi-Sensor | PD11-DALI-2-BMS-FLAT-FC | 93330 | Standard | IP 20 |

2.2.4 Tridonic Sensors DALI-2

| Device type | Description | Article Number | Sensor type | Additional information |
|--------------|--------------------------------|----------------|-------------|------------------------|
| Multi-Sensor | MSensor G3 SFI 30 PIR 10DPI WH | 28002119 | Standard | Mid Bay Sensor |
| Multi-Sensor | MSensor G3 SFI 30 PIR 16DPI WH | 28002234 | Standard | High Bay Sensor |

3 WAGO Lighting Management Software

Note



Software information!

For further information about the WAGO Lighting Management Software please use the following Link:

[Homepage Lighting Management](#)

3.1 WAGO Sensors

| Device type | Description | Article Number | Sensor type | Additional information |
|----------------|--|------------------------|-------------|---|
| Multi-Sensor | WAGO-DALI-Multi-Sensor-Kit | 2851-8201 | 1 | - |
| Sensor-Coupler | WAGO-DALI-Sensor-Coupler | 2851-8202 | 1 | - |
| Multi-Sensor | DALI Highbay Adapter + DALI Highbay | 2852-7207 2852-7201 | 1 | NOTE: The delay period (default 15 min) has to be set directly at the device. For further information see device manual. |
| Multi-Sensor | DALI Highbay Adapter + DALI Vision | 2852-7207 2852-7202 | 1 | - |
| Multi-Sensor | DALI LS/PD LI | 2852-7203 | 1 | Installation via LS/PD CI KIT or LS/PD AP KIT possible |
| Sensor-Coupler | DALI Sensor Coupler E | 2852-7204 | 1 | - |

| | | | | |
|----------------|---|-------------------------------------|---|---|
| Multi-Sensor | DALI Sensor Coupler HF LS LI + HF LS LI + 4p4c Connection Cable | 2852-7205 2852-7206 2852-7208 | 1 | - |
| Switch Coupler | DALI XC | 2852-7301 | 2 | Only Button pairs (e.g. B1 & B2 or B3 & B4) are configurable. |

3.2 Osram Sensors

| Device type | Description | Article Number | Sensor type | Additional information |
|--------------|---|----------------------------------|-------------|---|
| Multi-Sensor | Sensor Adapter + DALI Highbay | 4008321 774132 4008321 410078 | 1 | NOTE: The delay period (default 15 min) has to be set directly at the device. For further information see device manual. |
| Multi-Sensor | Sensor Adapter + DALI Vision | 4008321 774132 4008321 957047 | 1 | - |
| Multi-Sensor | DALI LS/PD LI | 4052899 043954 | 1 | Installation via LS/PD CI KIT or LS/PD AP KIT possible |
| Multi-Sensor | DALI Professional Sensor Coupler HF LS LI + DALI Radar Sensor HF LS LI | 4052899 141728 4052899 921481 | 1 | - |
| Gateway | DALI Sensor Coupler E | 4052899 230491 | 1 | - |

3.3 Tridonic Sensors

| Device type | Description | Article Number | Sensor type | Additional information |
|----------------|-------------|----------------|-------------|---|
| Switch Coupler | DALI XC | 22185327 | 2 | Only Button pairs (e.g. B1 & B2 or B3 & B4) are configurable. |

4 WAGO flexROOM® V3.x.x.x

Note



Software information!

For further information about the WAGO flexROOM® V3 Software visit www.wago.com

4.1 WAGO Sensors

| Device type | Description | Article Number | Sensor type | Additional information |
|----------------|--|------------------------|-------------|---|
| Multi-Sensor | WAGO-DALI-Multi-Sensor-Kit | 2851-8201 | 1 | - |
| Sensor-Coupler | WAGO-DALI-Sensor-Coupler | 2851-8202 | 1 | - |
| Multi-Sensor | DALI Highbay Adapter + DALI Highbay | 2852-7207 2852-7201 | 1 | NOTE: The delay period (default 15 min) has to be set directly at the device. For further information see device manual. |
| Multi-Sensor | DALI Highbay Adapter + DALI Vision | 2852-7207 2852-7202 | 1 | - |
| Multi-Sensor | DALI LS/PD LI | 2852-7203 | 1 | Installation via LS/PD CI KIT or LS/PD AP KIT possible |
| Sensor-Coupler | DALI Sensor Coupler E | 2852-7204 | 1 | - |

| | | | | |
|----------------|------------------------------|-----------|---|---|
| Multi-Sensor | DALI Sensor Coupler HF LS LI | 2852-7205 | 1 | - |
| | + HF LS LI | 2852-7206 | | |
| | + 4p4c Connection Cable | 2852-7208 | | |
| Switch Coupler | DALI XC | 2852-7301 | 2 | - |

4.2 Osram Sensors

| Device type | Description | Article Number | Sensor type | Additional information |
|----------------|---|----------------------------------|-------------|---|
| Multi-Sensor | Sensor Adapter + DALI Highbay | 4008321 774132 4008321 410078 | 1 | NOTE: The delay period (default 15 min) has to be set directly at the device. For further information see device manual. |
| Multi-Sensor | Sensor Adapter + DALI Vision | 4008321 774132 4008321 957047 | 1 | - |
| Multi-Sensor | DALI LS/PD LI | 4052899 043954 | 1 | Installation via LS/PD CI KIT or LS/PD AP KIT possible |
| Multi-Sensor | DALI Professional Sensor Coupler HF LS LI + DALI Radar Sensor HF LS LI | 4052899 141728 4052899 921481 | 1 | - |
| Gateway | DALI Sensor Coupler E | 4052899 230491 | 1 | - |
| Switch Coupler | DALI PRO PB Coupler | 4008321 496461 | 1 | - |

4.3 Tridonic Sensors

| Device type | Description | Article Number | Sensor type | Additional information |
|----------------|----------------------------------|----------------|-------------|------------------------|
| Multi-Sensor | MSensor 5DPI 14f (MSensor Mini) | 28000935 | 2 | - |
| Multi-Sensor | MSensor 5DPI 14rc (MSensor Mini) | 28000936 | 2 | - |
| Switch Coupler | DALI XC | 22185327 | 2 | - |
| Multi-Sensor | DALI-MSensor 02 5DPI 41rc | 28000895 | 2 | - |
| Multi-Sensor | DALI-MSensor 02 5DPI 41w | 28000896 | 2 | - |
| Multi-Sensor | DALI-MSensor 02 5DPI 41rs | 28000894 | 2 | - |

5 WAGO DALI Configurator

Note



WAGO DALI Configurator download!

You can download the WAGO DALI Configurator as a stand-alone tool free of charge from the WAGO website:

[Download WAGO DALI Configurator](#)

The WAGO DALI Configurator is also integrated in the WAGO-I/O-CHECK software (Item No. 759-302) version 3.4.1.9 or higher.

5.1 DALI Sensors

5.1.1 WAGO Sensors

| Device type | Description | Article Number | Sensor type | Additional information |
|----------------|--|------------------------|-------------|---|
| Multi-Sensor | WAGO-DALI-Multi-Sensor-Kit | 2851-8201 | 1 | - |
| Sensor-Coupler | WAGO-DALI-Sensor-Coupler | 2851-8202 | 1 | - |
| Multi-Sensor | WAGO-DALI-MSensor-02 5DPI 41rc | 2851-8301 | 2 | - |
| Multi-Sensor | WAGO-DALI-MSensor-02 5DPI 41w | 2851-8302 | 2 | - |
| Multi-Sensor | WAGO-DALI-MSensor-02 5DPI 41rs | 2851-8303 | 2 | - |
| Multi-Sensor | DALI Highbay Adapter + DALI Highbay | 2852-7207 2852-7201 | 1 | NOTE: The delay period (default 15 min) has to be set directly at the device. For further information see device manual. |

| | | | | |
|----------------|---|-------------------------------------|---|---|
| Multi-Sensor | DALI Highbay Adapter + DALI Vision | 2852-7207 2852-7202 | 1 | - |
| Multi-Sensor | DALI LS/PD LI | 2852-7203 | 1 | Installation via LS/PD CI KIT or LS/PD AP KIT possible |
| Sensor-Coupler | DALI Sensor Coupler E | 2852-7204 | 1 | - |
| Multi-Sensor | DALI Sensor Coupler HF LS LI + HF LS LI + 4p4c Connection Cable | 2852-7205 2852-7206 2852-7208 | 1 | - |
| Switch Coupler | DALI XC | 2852-7301 | 2 | - |

5.1.2 Osram Sensors

| Device type | Description | Article Number | Sensor type | Additional information |
|----------------|---|----------------------------------|-------------|---|
| Multi-Sensor | Sensor Adapter + DALI Highbay | 4008321 774132 4008321 410078 | 1 | NOTE: The delay period (default 15 min) has to be set directly at the device. For further information see device manual. |
| Multi-Sensor | Sensor Adapter + DALI Vision | 4008321 774132 4008321 957047 | 1 | - |
| Multi-Sensor | DALI LS/PD LI | 4052899 043954 | 1 | Installation via LS/PD CI KIT or LS/PD AP KIT possible |
| Multi-Sensor | DALI Professional Sensor Coupler HF LS LI + DALI Radar Sensor HF LS LI | 4052899 141728 4052899 921481 | 1 | - |
| Gateway | DALI Sensor Coupler E | 4052899 230491 | 1 | - |
| Switch Coupler | DALI PRO PB Coupler | 4008321 496461 | 1 | - |

5.1.3 Tridonic Sensors

| Device type | Description | Article Number | Sensor type | Additional information |
|----------------|----------------------------------|----------------|-------------|------------------------|
| Multi-Sensor | MSensor 5DPI 14f (MSensor Mini) | 28000935 | 2 | - |
| Multi-Sensor | MSensor 5DPI 14rc (MSensor Mini) | 28000936 | 2 | - |
| Switch Coupler | DALI XC | 22185327 | 2 | - |
| Multi-Sensor | DALI-MSensor 02 5DPI 41rc | 28000895 | 2 | - |
| Multi-Sensor | DALI-MSensor 02 5DPI 41w | 28000896 | 2 | - |
| Multi-Sensor | DALI-MSensor 02 5DPI 41rs | 28000894 | 2 | - |

5.1.4 Theben (HTS) Sensors

| Device type | Description | Article Number | Sensor type | Additional information |
|--------------|---|----------------|-------------|--------------------------|
| Multi-Sensor | PlanoSpot 360 DALI DE WH, Presence Detector | 2030110 | Standard | Only addressing possible |

5.1.5 Lunatone Sensors

| Device type | Description | Article Number | Sensor type | Additional information |
|----------------------|---|----------------|-------------|--------------------------|
| Multi Control Module | DALI MC+ | 86459532-WA | 2 | Only addressing possible |
| Switch | DALI Switch Cross Multifunctional Switch Module | 86459793 | 2 | Only addressing possible |

5.1.6 Steinel Sensors Livelink

| Device type | Description | Article Number | Sensor type | Additional information |
|--------------|--|----------------|-------------|--------------------------|
| Multi-Sensor | Presence Detector Dual HF Livelink | 4007841009700 | Standard | Only addressing possible |
| Multi-Sensor | Presence Detector IR Quattro HD Livelink | 4007841009717 | Standard | Only addressing possible |
| Multi-Sensor | Control Pro HF360 | 4007841033972 | Standard | Only addressing possible |
| Multi-Sensor | Control Pro US dualtech | 4007841008451 | Standard | Only addressing possible |
| Multi-Sensor | Control Pro US 360 | 4007841008444 | Standard | Only addressing possible |
| Multi-Sensor | Control Pro US aisle single | 4007841008437 | Standard | Only addressing possible |
| Multi-Sensor | IR Quattro Slim XS | 4007841033040 | Standard | Only addressing possible |
| Multi-Sensor | IS 3360 MX Highbay | 4007841009724 | Standard | Only addressing possible |
| Multi-Sensor | IS 345 MX Highbay | 4007841009731 | Standard | Only addressing possible |
| Multi-Sensor | IR micro sensor | 4007841009748 | Standard | Only addressing possible |
| Multi-Sensor | IS 3180 | 4007841049362 | Standard | Only addressing possible |
| Multi-Sensor | IS 3360 | 4007841049379 | Standard | Only addressing possible |
| Multi-Sensor | IS 345 | 4007841049416 | Standard | Only addressing possible |
| Multi-Sensor | HF 3360 | 4007841049454 | Standard | Only addressing possible |

5.2 DALI-2 Sensors



Note

Special library and visualization needed!

For the usage of the DALI-2 sensors `WagoAppDali` version V1.1.0.13 or newer is needed.
The actual version can be requested via the WAGO Support.

5.2.1 Steinel Sensors DALI-2

| Device type | Description | Article Number | Sensor type | Additional information |
|--------------|--|--------------------------------|-------------|------------------------|
| Multi-Sensor | IR Quattro | | Standard | |
| | - HD DALI-2 | 4007841057497 | | |
| | - SLIM XS DALI-2 | | | |
| | <ul style="list-style-type: none"> • Flush-mounted, angular • Flush-mounted, round | 4007841057510 4007841057527 | | |
| | - MICRO DALI-2 | 4007841053871 | | |
| Multi-Sensor | IR MICRO DALI-2 | 4007841057732 | Standard | |
| Multi-Sensor | DUAL HF DALI-2 | 4007841057459 | Standard | |
| Multi-Sensor | HF 360 DALI-2 | 4007841057480 | Standard | |
| Multi-Sensor | US 360 DALI-2 | 4007841057534 | Standard | |
| Multi-Sensor | Dual US DALI-2 | 4007841057466 | Standard | |
| Multi-Sensor | Single US DALI-2 | 4007841057503 | Standard | |

| | | | | |
|--------------|--|--|----------|--|
| Multi-Sensor | DualTech DALI-2 | 4007841057473 | Standard | |
| Multi-Sensor | IS 3360 DALI-2 - Wall-mounted, angular - Wall-mounted, round - Flush-mounted, angular - Flush-mounted, round | 4007841057237 4007841057251 4007841057244 4007841057268 | Standard | |
| Multi-Sensor | IS 345 DALI-2 - Wall-mounted, angular - Wall-mounted, round - Flush-mounted, angular - Flush-mounted, round | 4007841057275 4007841057299 4007841057282 4007841057305 | Standard | |
| Multi-Sensor | HF 3360 DALI-2 - Wall-mounted, angular - Wall-mounted, round - Flush-mounted, angular - Flush-mounted, round | 4007841057312 4007841057329 4007841057336 4007841057343 | Standard | |
| Multi-Sensor | IS 3360 MX Highbay DALI-2 - Wall-mounted, angular - Flush-mounted, angular | 4007841057374 4007841057381 | Standard | |
| Multi-Sensor | IS 345 MX Highbay DALI-2 - Wall-mounted, angular - Flush-mounted, angular | 4007841057398 4007841057404 | Standard | |
| Multi-Sensor | IS 3180 DALI-2 - Wall-mounted, angular - Concealed, angular | 4007841057350 4007841057367 | Standard | |

| | | | | |
|--------------|--|--|----------|--|
| Multi-Sensor | Light Sensor Dual DALI-2 - Wall-mounted, angular - Wall-mounted, round - Flush-mounted, angular - Flush-mounted, round | 4007841057411 4007841057428 4007841057435 4007841057442 | Standard | |
| Multi-Sensor | IR Quattro - HD DALI-2 - SLIM XS DALI-2 • Flush-mounted, angular • Flush-mounted, round - MICRO DALI-2 | 4007841057497 4007841057510 4007841057527 4007841053871 | Standard | |
| Multi-Sensor | Light Sensor Dual | 4007841009762 | Standard | |

5.2.2 Niko / Züblin DALI-2

| Device type | Description | Article Number | Sensor type | Additional information |
|--------------|--|----------------|-------------|------------------------|
| Multi-Sensor | BMS DALI-2 - Ceiling, 24m, flush mounted | 41-742 | Standard | IP 20, 360° (3x120°) |
| Multi-Sensor | BMS DALI-2 - Ceiling, 24m, surface mounted | 41-743 | Standard | IP 54, 360° (3x120°) |
| Multi-Sensor | BMS DALI-2 - High Ceiling, 32m, flush mounted | 41-745 | Standard | IP 54, 360° (3x120°) |

5.2.3 B.E.G. Sensors DALI-2

| Device type | Description | Article Number | Sensor type | Additional information |
|--------------|-------------------------|----------------|-------------|--|
| Multi-Sensor | PD4-DALI-2-BMS-FC | 93312 | Standard | IP 20 |
| Multi-Sensor | PD4-DALI-2-BMS-SM | 93325 | Standard | IP 54 |
| Multi-Sensor | PD4-DALI-2-BMS-C-FC | 93332 | Standard | IP 20 |
| Multi-Sensor | PD4-DALI-2-BMS-C-SM | 93357 | Standard | IP 54 |
| Multi-Sensor | PD11-DALI-2-BMS-FLAT-FC | 93330 | Standard | IP 20 Installation via Flush mount adapter set possible |

5.2.4 Tridonic Sensors DALI-2

| Device type | Description | Article Number | Sensor type | Additional information |
|--------------|--------------------------------|----------------|-------------|------------------------|
| Multi-Sensor | MSensor G3 SFI 30 PIR 10DPI WH | 28002119 | Standard | Mid Bay Sensor |
| Multi-Sensor | MSensor G3 SFI 30 PIR 16DPI WH | 28002234 | Standard | High Bay Sensor |

WAGO Kontakttechnik GmbH & Co. KG
Postfach 2880 • D-32385 Minden
Hansastraße 27 • D-32423 Minden
Phone: +49 (0) 571/8 87 – 0
Fax: +49 (0) 571/8 87 – 1 69
E-Mail: info@wago.com
Internet: <http://www.wago.com>

